

Armonia di Pietre



index

faces _ _ _ _ _	14
size and colors _ _ _ _ _	16
technical _ _ _ _ _	18
price list _ _ _ _ _	19

La NATURA dipinge per noi
giorno dopo giorno
IMMAGINI di infinita
bellezza...

ARMONIA:

fusione e passione di
Pietra, Marmo e Cemento
caldo e avvolgente.

NATURA paints images of
infinite beauty for us
day after day

HARMONIA:

fusion and passion of
Stone, Marble and
Cement warm and enveloping
together





La forza della PIETRA
viene fusa dall'eleganza
del MARMO e unita
alla concretezza del
CEMENTO.
Ciò che avviene è un
esplosione di ELEGANZA.

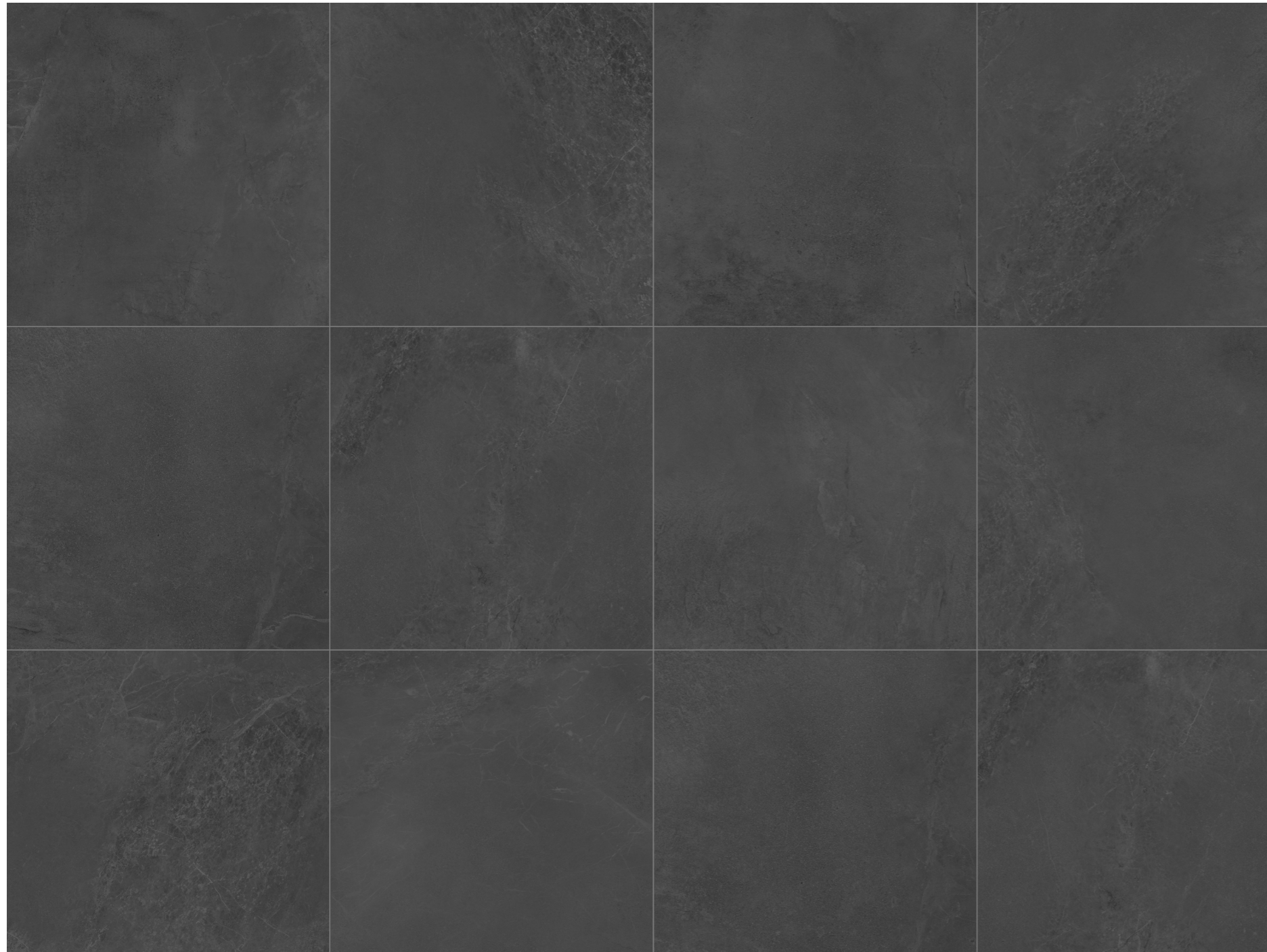
The strength
of the STONE
is melted by the elegance
of the MARBLE and combined
with the concreteness
of the CONCRET.
what happens is an
explosion of ELEGANCE.







different faces camelot



HOTEL
HOTEL



RESISTENZA SCIVOLOSITÀ
SLIP RESISTANCE



SPESSORE
THICKNESS



RETTIFICATO
RECTIFIED

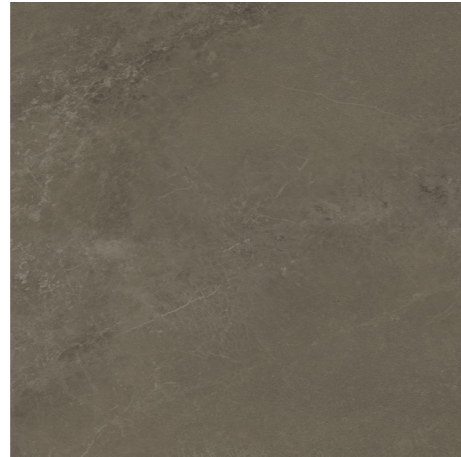


LIEVE VARIAZIONE
LIGHT VARIATION

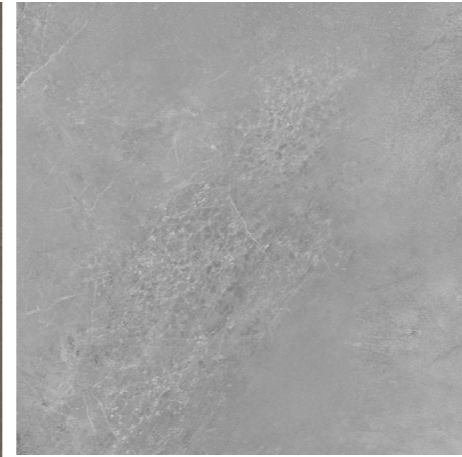
Beige



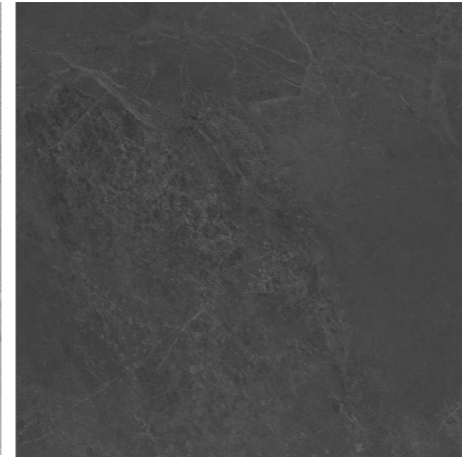
Noce



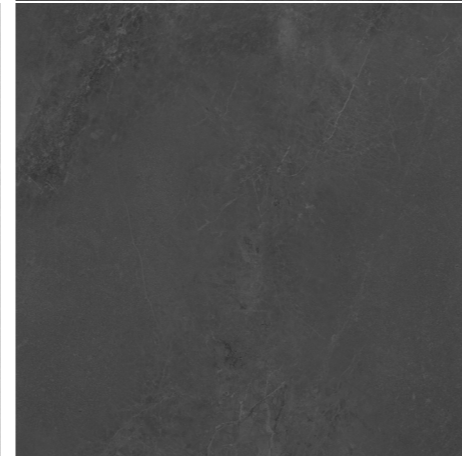
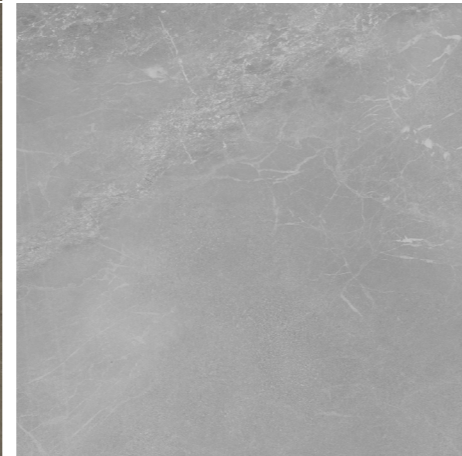
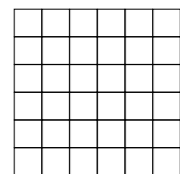
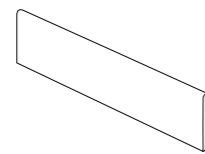
Grigio



Antracite



Armonia di Pietra

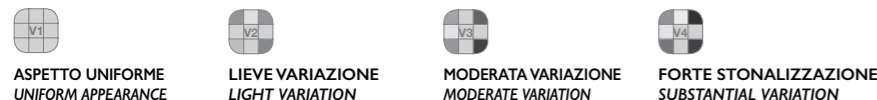
60X120 **R** 2060X60 **R** 10MOSAICO 5X5 **Pz** 4BATTISCOPA 8X60 **Pz** 1

IMBALLI E PESI - PACKING AND WEIGHTS - VERPACKUNGEN UND GEWICHTE - EMBALLAGE ET POIDS

Formato Size Format Format	SCATOLA/BOX			Kg./mq. Sqm/mq Kg/mq kg/mq	PALLET			FORNITO
	Pz./Scat. Pcs/Box Stck/Kart. Pcs/Boite	mq./Scat. Sqm/Box Qm/Kart. Mc/Boite	Kg./Scat. Kg/Box Kg/Kart Kg/Boite		Scatole Boxes Kartons Boites	mq Sqm Qm Mc	Kg. Kg Kg Kg	
60x120	2	1,44	30,4	22,22	35	50,40	1064	-
60x60	4	1,44	32,5	22,57	30	43,20	975	-
8x60 BATTISCOPA	18	0,864	17,50	20,25	30	25,92	525	-
5x5 MOSAICO	6	0,54	12	23	60	32,40	720	su rete - On net Auf Netz - Sur trame

SIMBOLI E SPECIFICHE TECNICHE - SYMBOLS AND TECHNICAL SPECIFICATIONS - SYMBOLE UND TECHNISCHE SPEZIFIKATIONEN - SYMBOLES ET SPÉCIFICATIONS TECHNIQUES

**TONALITÀ MISCELATE
MIXED COLOURS - GEMISCHTE FARBEN - COULEURS MÉLANGÉES**



**CARATTERISTICHE TECNICHE
TECHNICAL FEATURES - TECHNISCHE BEZEICHNUNGEN - CARACTÉRISTIQUES TECHNIQUES**

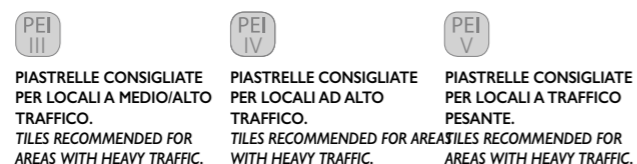


**SPECIFICITÀ DEL PRODOTTO
TECHNICAL SPECIFICATIONS OF THE PRODUCT - TECHNISCHE SPEZIFIKATIONEN DES PRODUKTES - SPÉCIFICATIONS TECHNIQUES DU PRODUIT**



**I GRADI DEI PEI
PEI RATING - PEI RATING - EVALUATION DES PEI**

Secondo la norma UNI EN ISO 10545/7, il PEI determina la resistenza all'abrasione della superficie delle piastrelle smaltate.
According to UNI EN ISO 10545/7, PEI determines the wear resistance of the surface of glazed tiles.



CONSIGLI PER LA POSA - SUGGESTIONS FOR LAYING - RATSCHLÄGE FÜR DIE VERLEGUNG - CONSEILS POUR LA POSE

Viste le caratteristiche delle serie si consiglia:	Considering the characteristics of this series we suggest:	Im Hinblick auf die Eigenschaften der Serie man empfehly:	Vues les caracteristiques de la serie nous conseillons:
- Rivestimento Fuga di 2-3mm.	- Wall tiles 2-3 mm. joint	- Wandfliesen 2-3 mm. Fuge	- Carreaux pour murs Joint 2/3mm.
- Pavimento Si consiglia la posa affiancata o a correre sfalsata 4/5 - con fuga di 3-4mm.	- Floor tiles ined up laying or 4/5 staggered laying is suggested - 4/5mm joint	- Bodenfliesen Neben verlegt oder 4/5 versetzt 4/5 mm Fuge	- Carreaux pour sol Il est conseillé une pose alignée - Joint 4-5 mm

SIMBOLI LETTURA LISTINO - SYMBOLS PRICE LIST INDICATION - SYMBOLE DER PREISLISTE - SYMBOLES DE LA LISTE DE PRIX

**SIMBOLI LETTURA LISTINO
SYMBOLS PRICE LIST INDICATION - SJMBOLE DER PREISLIST - SJMBOLES DE LA LISTE DE PRIX**



LISTINO PREZZI

CODICE CODE Nr.	PREZZO PRICE EURO	CODICE CODE Nr.	PREZZO PRICE EURO	CODICE CODE Nr.	PREZZO PRICE EURO
1	5,5	11	37	21	54
2	7	12	40	22	55
3	12	13	41	23	57
4	14	14	42	24	59
5	16	15	44	25	60
6	18	16	45	26	65
7	25	17	47	27	70
8	27	18	51	28	75
9	30	19	52	29	80
10	34	20	53	30	85



www.happyhouseitalia.com

Via Ruvinaldo 67 - Fiorano Modenese (MO) - ITALIA

Magazzino: VIA Rimini N. 4 - Rubiera (RE) - ITALIA

T+390522624016 F+390522984464 E. info@happyhouseitalia.com